

# CHEMETRON Type Medical Gas Outlets



# CHEMETRON Type Medical Gas Outlets

PAHSCO® CHEMETRON Type medical gas outlets are integral to medical gas supply system. PAHSCO® CHEMETRON Type Gas Outlets comply with NFPA99 and CGA regulations and pass the leak tests and connector stability checks. A package of medical gas outlet includes finishing and rough-in assembly. In addition, PAHSCO® CHEMETRON Type Gas Outlets are color-coded with labels and marked with gas name according to NFPA 99 or ISO 7396. They can only connect to corresponding CHEMETRON Type Quick Adapter. This is to prevent interchangeability of gas services, hence ensures safety in medical supply. CHEMETRON Type Gas Outlets are available in Wall and Console Types.

## Features and Benefits

- Comply with NFPA 99 & CGA
- Color coded according to USA standard
- 360° swivel inlet copper pipe for easy installation.
- 100% pressure and leak tested
- Full range of mounting options
- Available in Wall and Console Types
- Connect to gas specific CHEMETRON Type Quick Adapters



# Wall Type

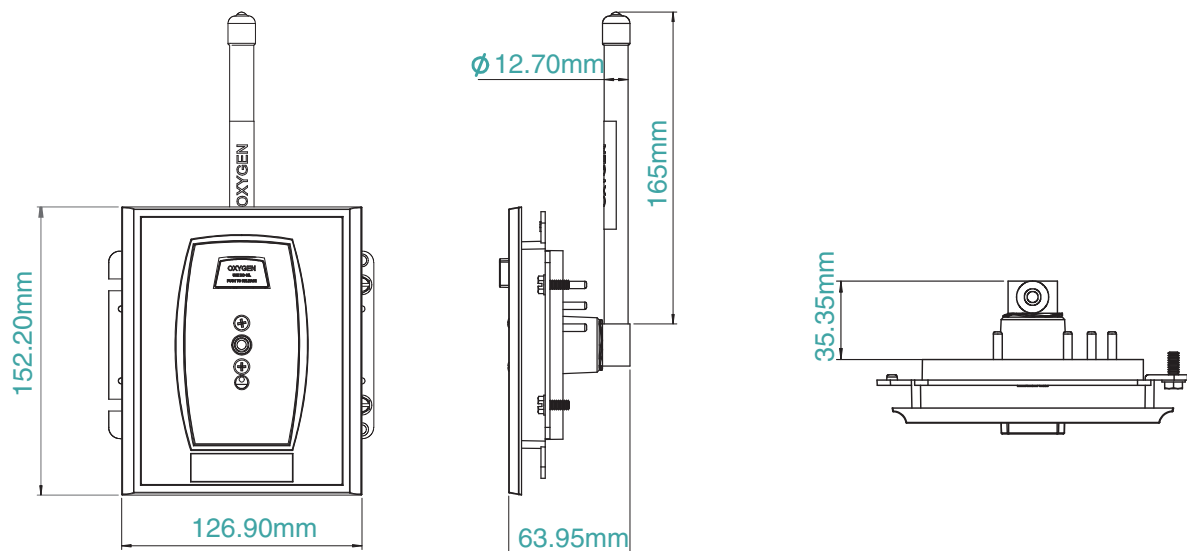
Wall Type Gas Outlet includes finishing and rough-in assembly. The finishing assembly has gas specific index corresponding to the gas service on the rough-in assembly to prevent interchanging of gas service. Each finishing assembly shall be color coded for its specified gas service and processed by sandblasting treatment and painting. The finishing assembly is intended for the level connection of the medical gas wall outlets and filling up neighbor space. The rough-in assembly is available in 1/2" K type copper pipe, which swivels 360° for easy installation.

## Gases and Services

- Oxygen
- Air
- Vacuum
- Nitrous Oxide
- Carbon Dioxide
- WAGD



## Dimensions



# Console Type

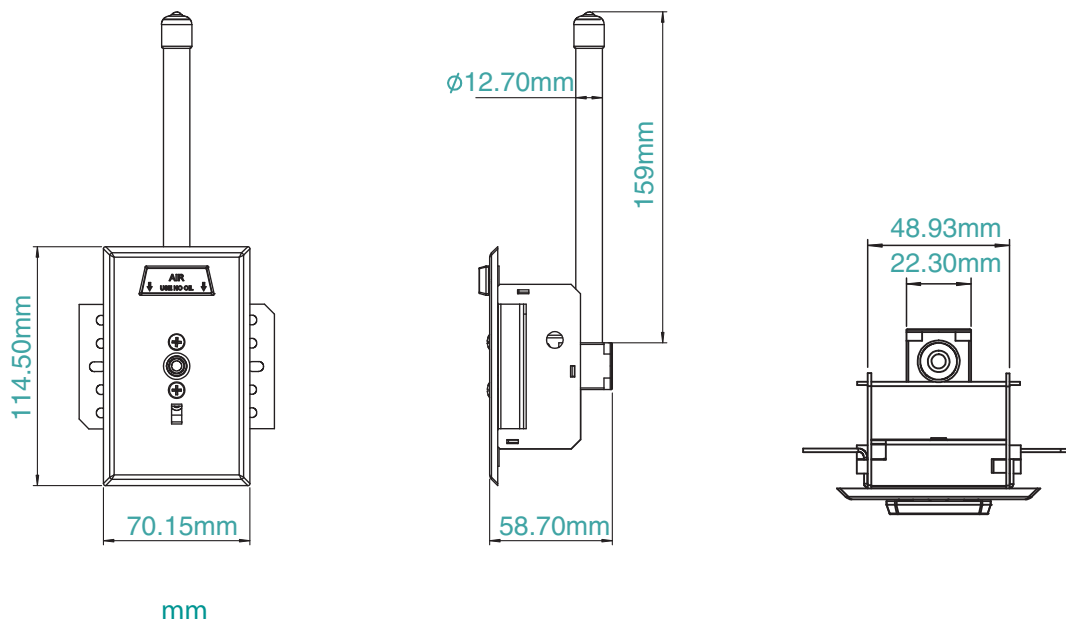
Console Type Gas Outlet includes finishing and rough-in assembly. The finishing assembly has gas specific index corresponding to the gas service on the rough-in assembly to prevent interchanging of gas service. Each finishing assembly shall be color coded for its specified gas service and be mounted for bedhead gas trunking system. The rough-in assembly is available in 1/2" K type copper pipe, which swivels 360° for easy installation.

## Gases and Services



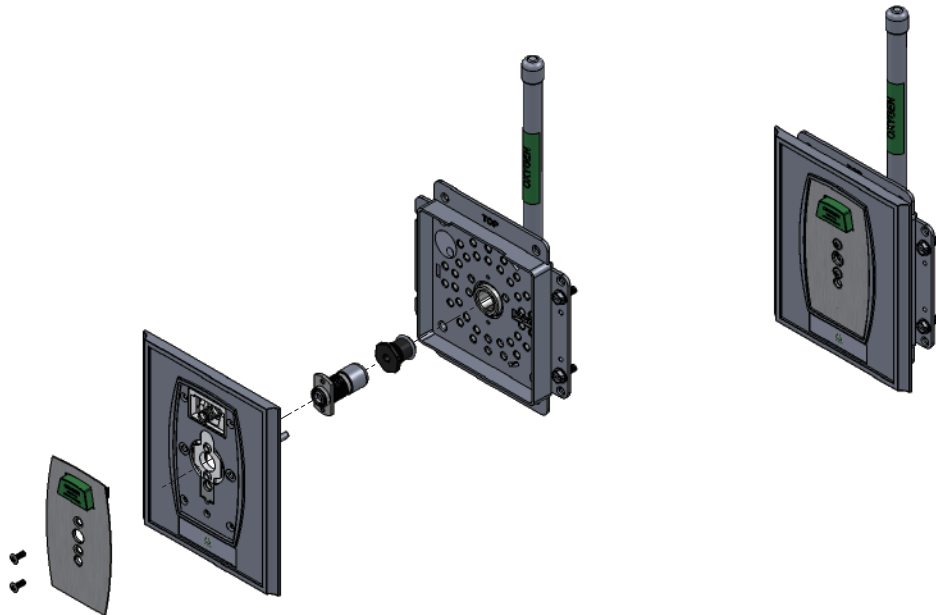
- Oxygen
- Air
- Vacuum
- Nitrous Oxide
- Carbon Dioxide
- WAGD

## Dimensions

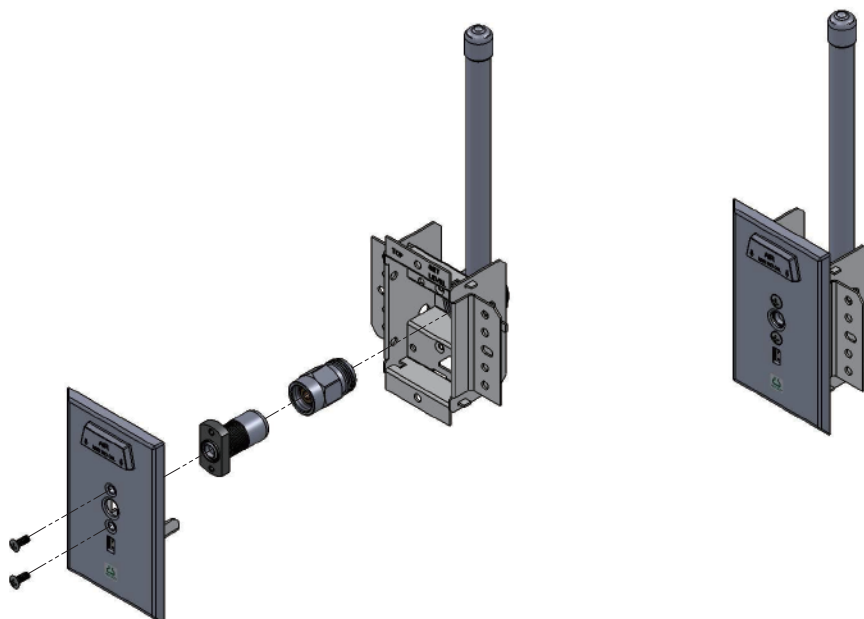


# Exploded Diagram

## Wall Type



## Console Type



# Ordering Information

## ■ Wall Type

PAHSCO No.	Description	Specification
10322051	O2	1/2" COPPER TUBE
10322052	VAC	1/2" COPPER TUBE
10322053	AIR	1/2" COPPER TUBE
10322054	CO2	1/2" COPPER TUBE
10322055	N2O	1/2" COPPER TUBE
10322056	WAGD	1/2" COPPER TUBE
10322007	SLIDE	1/2" COPPER TUBE

## ■ Console Type

PAHSCO No.	Description	Specification
10434051	O2	1/2" COPPER TUBE
10434052	VAC	1/2" COPPER TUBE
10434053	AIR	1/2" COPPER TUBE
10434054	CO2	1/2" COPPER TUBE
10434055	N2O	1/2" COPPER TUBE
10434056	WAGD	1/2" COPPER TUBE

# CHEMETRON DISS

## Medical Gas Outlets





# CHEMETRON DISS Medical Gas Outlets

PAHSCO® CHEMETRON DISS Medical Gas Outlets are designed with CGA's concept of Diameter Index Safety System, and is meant for medical gases at 200 psig or less. Gas outlets are integral to medical gas supply system. PASHCO® CHEMETRON DISS Gas Outlets comply with NFPA99 and CGA regulations. At the same time, they pass various leak tests and connector stability checks. A complete medical gas outlet includes finishing and rough-in assembly. Moreover, PAHSCO® CHEMETRON DISS Gas Outlets are color-coded with labels and marked with gas name according to NFPA 99 or ISO 7396. They only accept corresponding DISS Quick Adapter. This is to effectively eliminate interchangeability of gas services, hence ensures safety in medical supply. PASHCO® CHEMETRON DISS Gas Outlets are available in Wall and Console Types.

## Features and Benefits

- CE certified and UL listed
- Comply with NFPA 99 & CGA
- Color coded according to USA standard
- 360° swivel inlet copper pipe for installation from any angle
- 100% pressure and leak tested
- Full range of mounting options
- Available in Wall Type and Console Type
- Connect to gas specific DISS Quick Adapter













# Wall Type

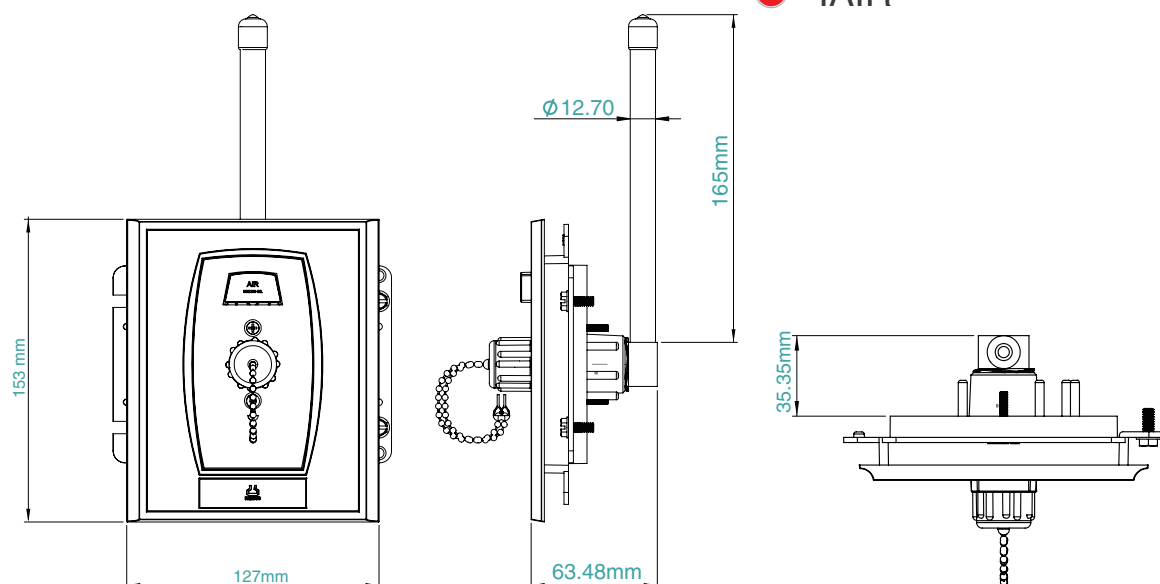
CHEMETRON DISS Wall Outlet includes finishing and rough-in assembly. The finishing assembly has gas specific index corresponding to the gas service on the rough-in assembly to prevent interchanging of gas service. Each finishing assembly shall be color coded for its specified gas service and processed by sandblasting treatment and painting. The finishing assembly is intended for the level connection of the medical gas wall-outlets and filling up neighbor space. The rough-in assembly is available in 1/2", K type copper pipe, which swivels 360° for installation from any angle.



## Gases and Services

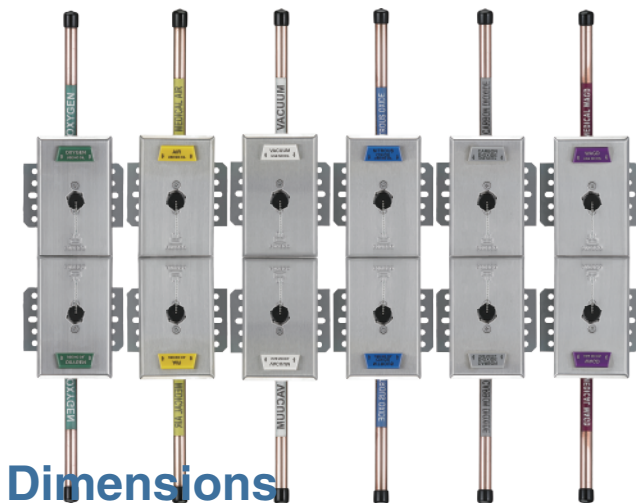
-  Oxygen
-  Medical Air
-  Vacuum
-  Carbon Dioxide
-  Nitrous Oxide
-  Nitrogen
-  WAGD
-  IAIR

## Dimensions



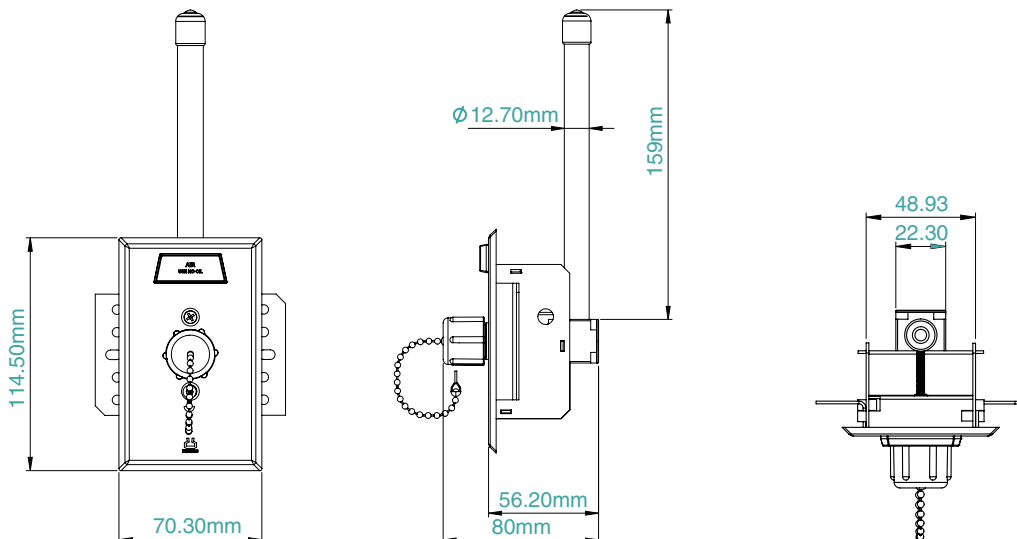
# Console Type

CHEMETRON DISS Console Outlet includes finishing and rough-in assembly. The finishing assembly has gas specific index corresponding to the gas service on the rough-in assembly to prevent interchanging of gas service. Each finishing assembly shall be color coded for its specified gas service and be mounted for bed head gas trunking system. The rough-in assembly is available in 1/2", K type copper pipe, which swivels 360° for effortless installation.



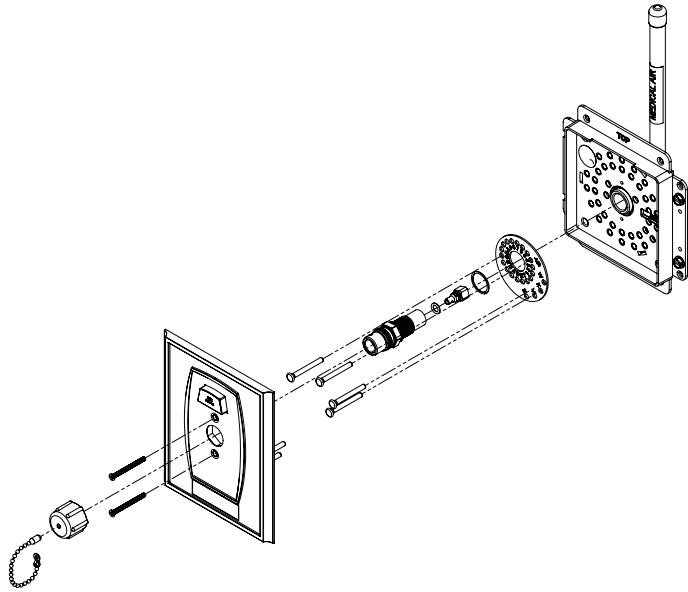
## Gases and Services

- Oxygen
- Medical Air
- Vacuum
- Carbon Dioxide
- Nitrous Oxide
- Nitrogen
- WAGD
- IAIR

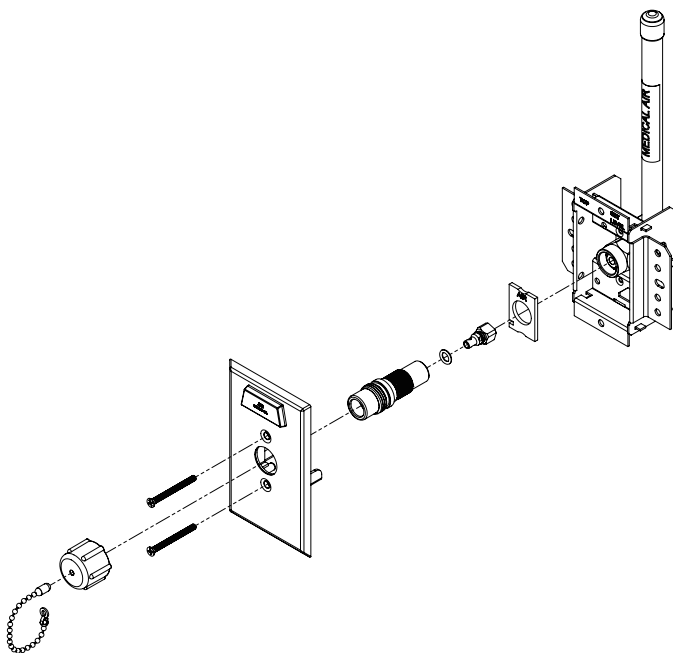


# Exploded Diagram

## Wall Type



## Console Type



# Ordering Information

## ■ Wall Type Rough-In Assembly

PAHSCO No.	Description	Specification
10322141	O2	1/2" COPPER TUBE
10322143	AIR	1/2" COPPER TUBE
10322146	VAC	1/2" COPPER TUBE
10322144	CO2	1/2" COPPER TUBE
10322142	N2O	1/2" COPPER TUBE
10322145	N2	1/2" COPPER TUBE
10322147	WAGD	1/2" COPPER TUBE
10322148	IAIR	1/2" COPPER TUBE

## ■ Console Type Rough-In Assembly

PAHSCO No.	Description	Specification
10428251	O2	1/2" COPPER TUBE
10428253	AIR	1/2" COPPER TUBE
10428252	VAC	1/2" COPPER TUBE
10428254	CO2	1/2" COPPER TUBE
10428256	N2O	1/2" COPPER TUBE
10428255	N2	1/2" COPPER TUBE
10428257	WAGD	1/2" COPPER TUBE
10428258	IAIR	1/2" COPPER TUBE

## ■ Wall Type Service Kit

PAHSCO No.	Description	Specification
8040000031	O-ring Kit	AIR, N2O, CO2, IAIR, N2
8040000032	O-ring Kit	O2
8040000034	O-ring & Spring Kit	VAC, WAGD

## ■ Console Type Service Kit

PAHSCO No.	Description	Specification
8040000031	O-ring Kit	AIR, N2O, CO2
8040000032	O-ring Kit	O2, IAIR
8040000033	O-ring & Spring Kit	N2
8040000034	O-ring & Spring Kit	VAC, WAGD

# CHEMETRON DISS

## Medical Gas Outlets

